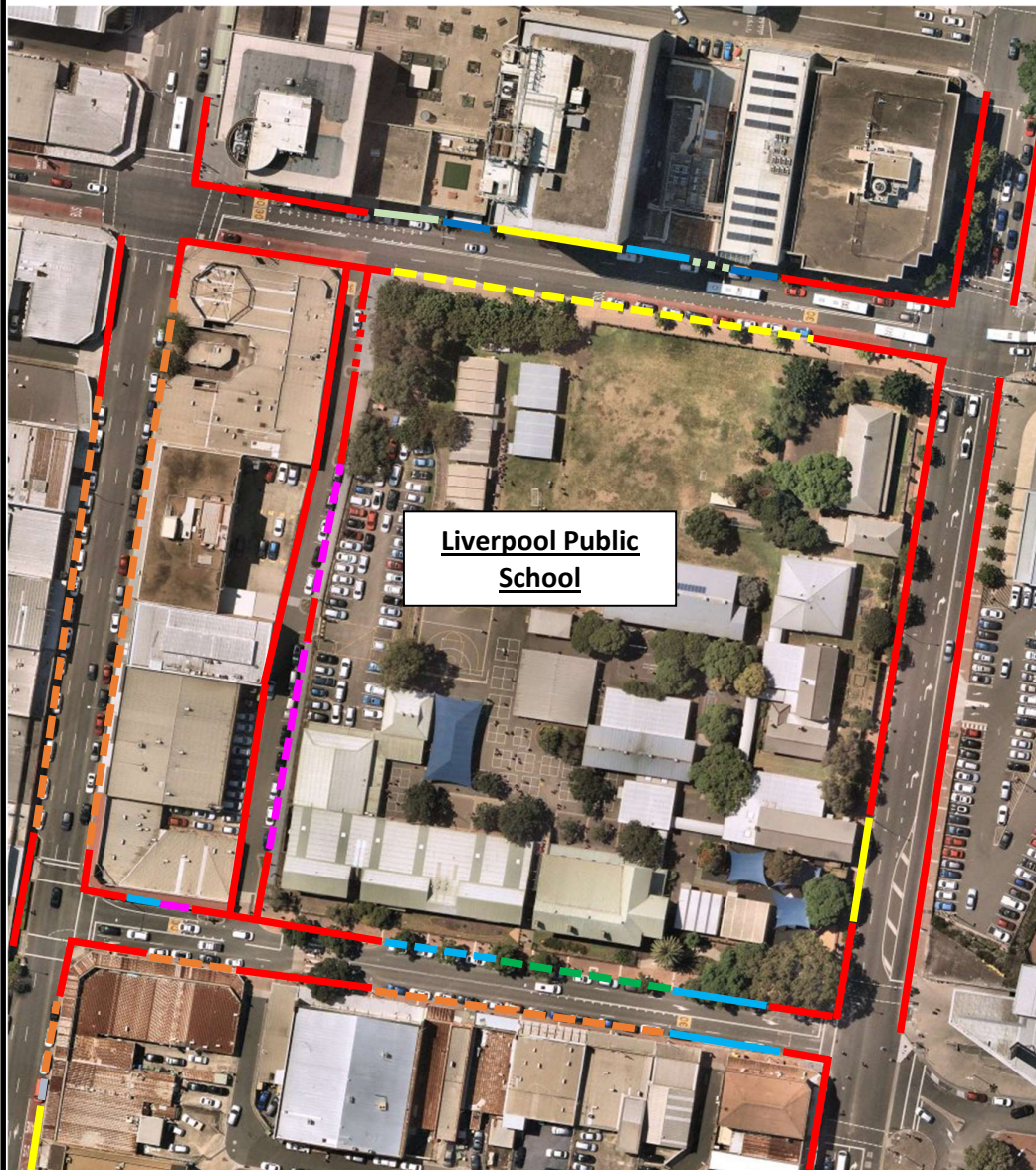


How to Park Safely at Liverpool Public School



Liverpool Public School

LIVERPOOL CITY COUNCIL

Road safety is everyone's responsibility.
Fines and demerit points apply for parking offences.


No Stopping


Do NOT stop here at all. 

No Parking (kiss and ride)

You may stop for **2 minutes** but the driver must not move more than **3 metres** from the vehicle.


You must not queue to get a spot here – if there are no available spaces you must keep driving and come back.


8-9:30am, 2:30-4pm School days 

All the time 

BUS Zone

Do NOT stop here at all.


All the time 

6-10am – 3-7pm Mon-Fri 


Timed Parking

Unrestricted until 9:30am / 1P meter 9:30am – 2:30pm / ¼ P 2:30-4pm 


Timed Parking


1P meter 9am – 6pm 


Timed Parking

¼ P 8 – 9:30am, 2:30-4pm school days 

Other Parking

Disabled Parking 

15min P 

½ P 8:30am – 6pm 

Car Parks

There is also a range of free off-street parking available nearby. There are car parks in Speed St, Bathurst St South and Liverpool Railway Station. Westfield Liverpool also has parking that is free for 0-3 hours.

Walking

Another option is for students to walk. Even if home is too far to walk all the way, park your vehicle a bit further away from the school and meet your child there, or walk up to the school to meet them.

